



LÝDIA KUBEKOVÁ
SECOND YEAR OF MAGISTER DEGREE
WINTER TERM 2021, ATV

REVITALISATION OF THE RECTORY'S GARDEN
KRÁSNÁ - REGENERATION OF THE OLD RECTORY HOUSE
ŽELEZNÝ BROD REGION, CZECH REPUBLIC

DESIGN STUDIO EFLER (EFLER - TOMSA - STOČES)
DEPARTMENT OF ARCHITECTURAL CONSERVATION
FACULTY OF ARCHITECTURE, ČTÚ IN PRAGUE



The aim of this project was to bring new life to the close surroundings of the old rectory in Krásná.

Inspiration for this design were baroque gardens with their symmetry and water components.

Since the terrain around the building is complicated and the stairs to the upper terrace are not in the middle of the garden, which disturbs any attempt for symmetry, I decided to divide the garden into three parts. First two are placed in the upper terrace and create semblance of axis symmetry with the pool as a central point, while the 3rd part is placed slightly beneath, connected with pair of stair and serves as vista to the local panorama.

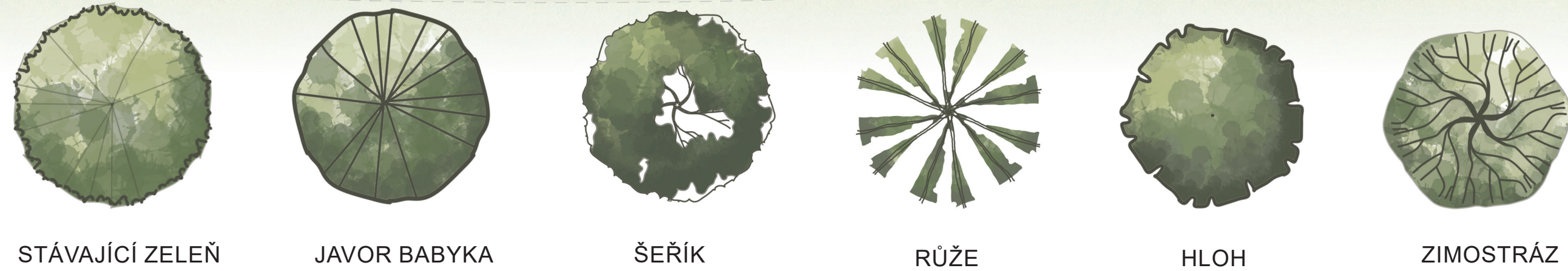
The front part of the site is also devised symmetrically with the plague pillar as the main point. This part is supposed to be representative and serve as a small low garden (which is missing in the location), during the time of annual pilgrimage there is enough space for the market stands and paved surface allows for other community activities.



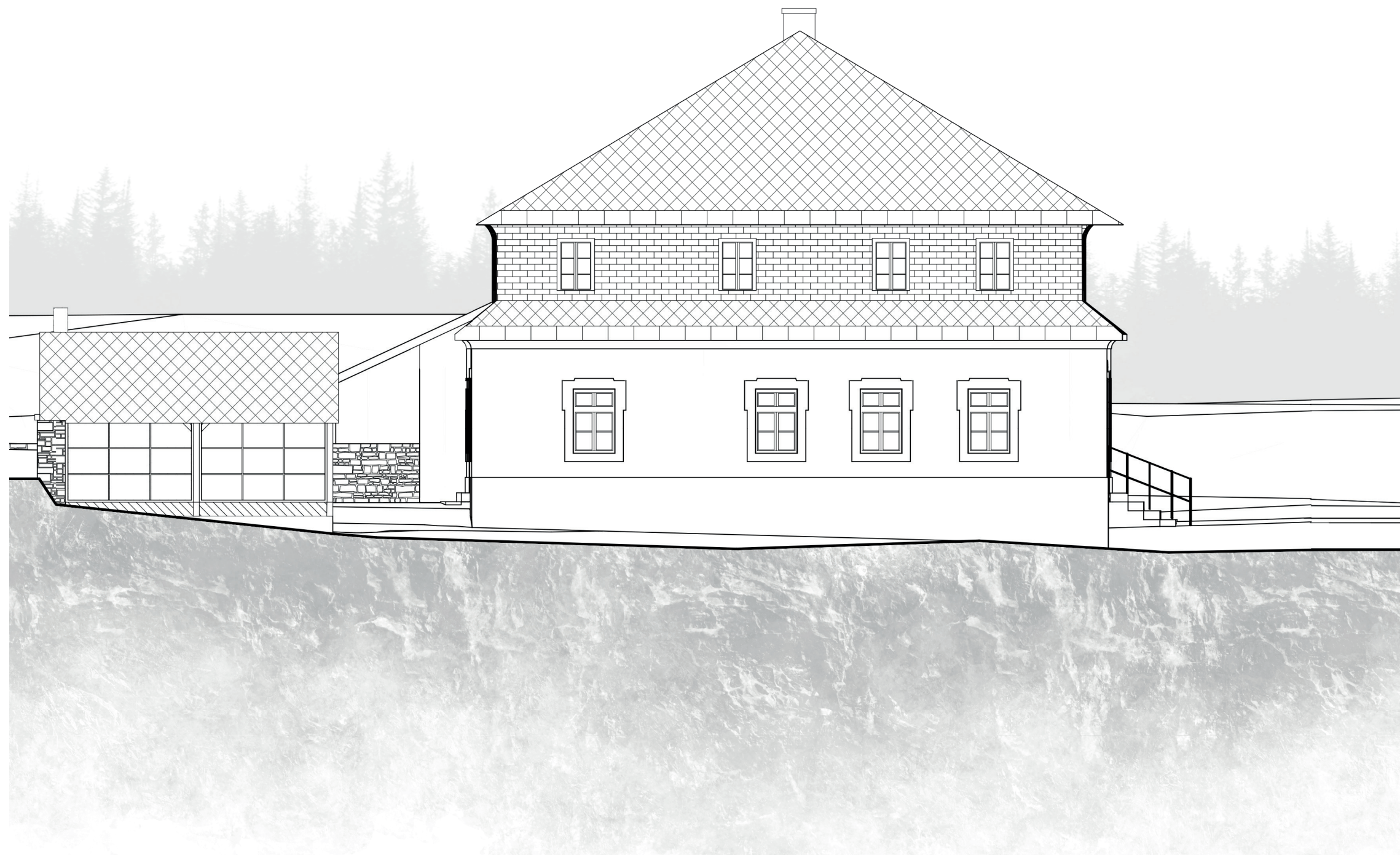
LEGENDA MATERIÁLŮ



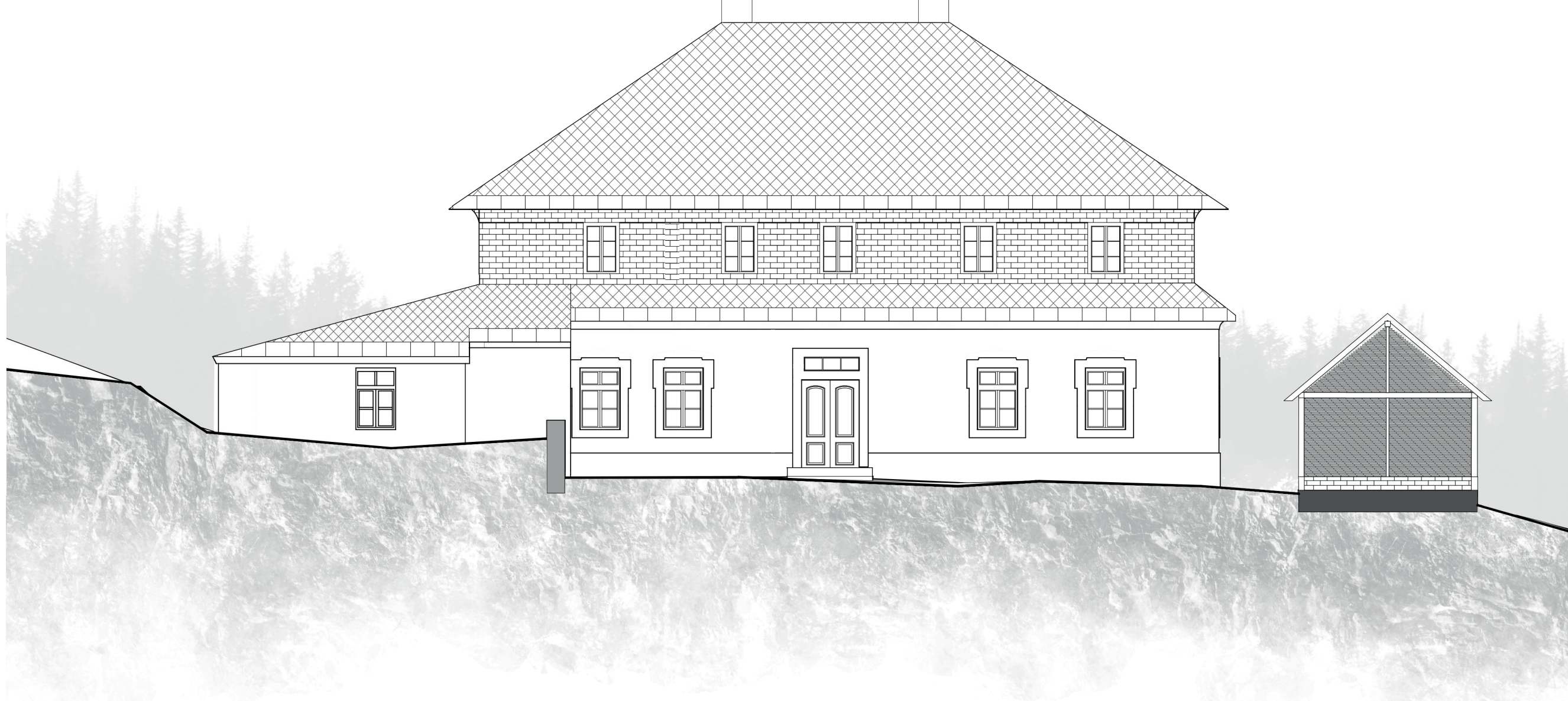
LEGENDA DŘEVIN



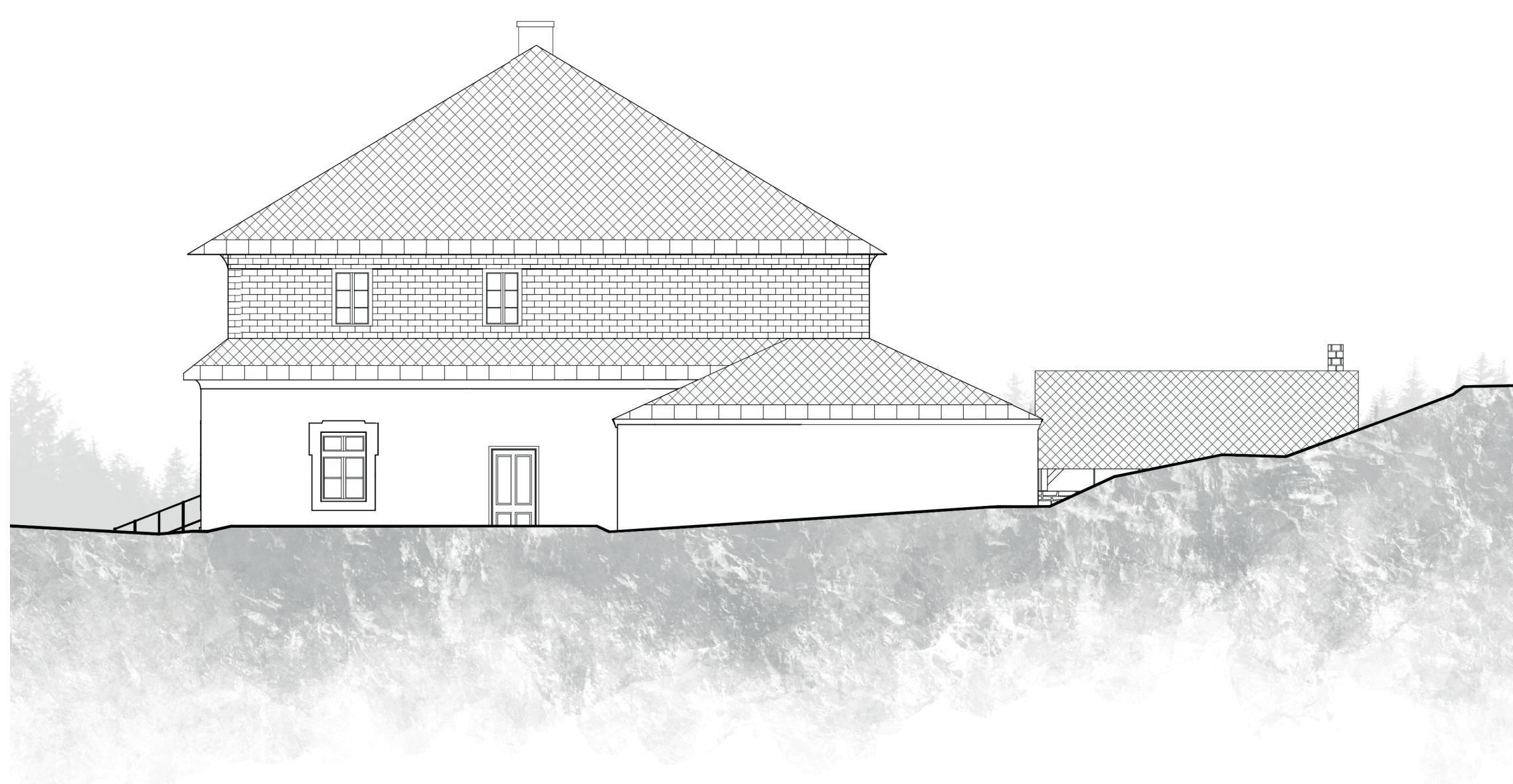
POHLED VÝCHODNÍ 1:100



POHLED JIŽNÍ 1:100



POHLED ZÁPADNÍ 1:100



POHLED SEVERNÍ 1:100

